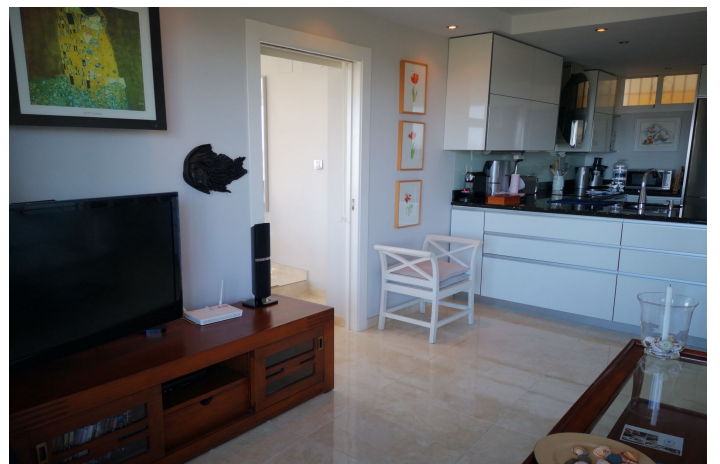


# Penthouse for rent in Marbesa, Marbella

Price: 1,000 - 1,400

€

Reference1: LS1967499 Bedrooms: 2 Bathrooms: 2 Plot Size: 0m<sup>2</sup> Build Size: 70m<sup>2</sup> Terrace: 100m<sup>2</sup>



## Location: Marbesa

2 Bedroom apartment for holiday rental in Marbesa: This is a wonderful 2 bedroom penthouse with the most amazing huge terrace where you can laze around on a balinesian style chill out bed, looking out to the sparkling Mediterranean. Every detail has been thought of in this perfect holiday home. There are 2 bathrooms, both with large showers, and both bedrooms have twin beds which can be pushed together. The state of the art kitchen is completely equipped with hob, oven, microwave, toaster, coffeemaker, Nespresso machine, juicer, dishwasher, fridge freezer and all appliances are either Bosch or Miele. The glassware and crockery is of the best quality and no detail has been missed. The highlight of this penthouse is the terrace where you will find a dining table and chairs, sofas and armchairs as well as a large double chill out bed, parasols and a proper overhead shower when you need to cool off. This apartment is suitable for over 18s only.

The prestigious area of Marbesa is a well established residential and holiday resort area, with some small supermarkets, cafes, bars and restaurants. Just a few minutes walk from your front door will bring you to one of the best sandy beaches in the Costa del Sol, where you will find many restaurants and bars as well as the famous Don Carlos Hotel and Nikki Beach. Marbesa is just 20 minutes drive away from the centre of Marbella and also to Fuengirola, making it ideally located to numerous attractions.

Short term holiday rentals ONLY, exact price on request. No smoking, no pets permitted. Tourist apartment licence no: VFT/MA/01555

## Features:

### Features

Covered Terrace

Lift

Near Transport

Private Terrace

Satellite TV

Ensuite Bathroom

Marble Flooring

Double Glazing

Fitted Wardrobes

WiFi

Restaurant On Site

### Views

Sea Views

Mountain Views

Panoramic Views

Country Views

Garden Views

Pool Views

### Pool

Communal Pool

### Garden

Communal Garden

### Orientation

South

South East

South West

### Climate Control

Air Conditioning

### Setting

Beachside

Urbanisation

Close To Sea

Close To Shops

### Condition

Excellent

### Furniture

Fully Furnished

### Security

Gated Complex

### Kitchen

Fully Fitted

### Parking

Open