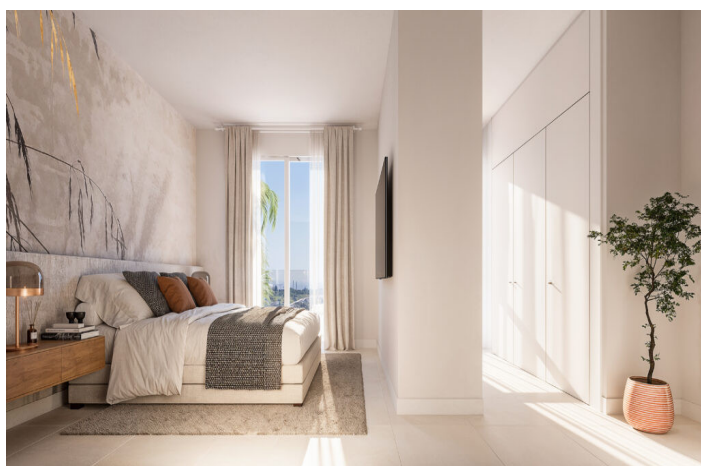
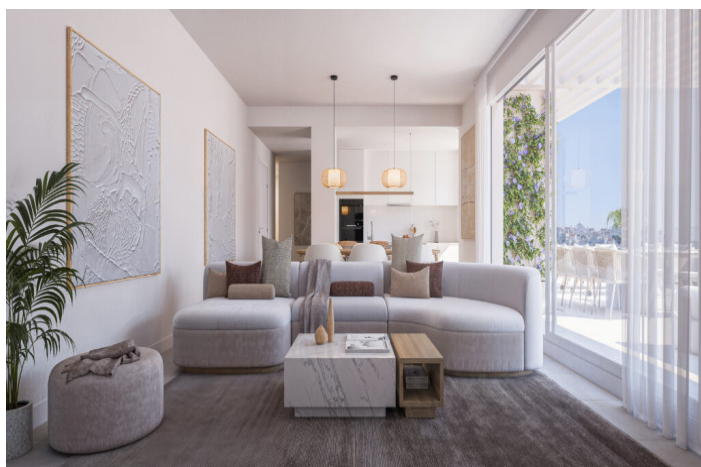




# Sunny Estepona Apartments Overlooking Golf and Peaceful Bay Views

Price: 215,000 -  
558,000 €

Reference1: LS30072   Bedrooms: 1   Bathrooms: 1   Plot Size: 0m<sup>2</sup>   Build Size: 65m<sup>2</sup>   Terrace: 16m<sup>2</sup>





## Location: Estepona

New Development: Prices from 215,000 € to 558,000 €. [Beds: 1 - 3] [Baths: 1 - 2] [Built size: 65.00 m2 - 138.00 m2] This development is an exclusive residential complex comprising 144 1, 2 and 3 bedroom homes, distributed in six low-rise buildings. Its avant-garde and modern design blends perfectly with the natural surroundings, offering its residents spectacular views of the Bay of Estepona and the Valle Romano golf course. The south orientation of the homes ensures that they all have excellent luminosity, making the most of the hours of natural light. The large windows not only allow you to enjoy the panoramic views, but also create a bright and spacious atmosphere, enhancing the feeling of comfort. The living rooms, designed to create a fluid connection with the exterior, enhance the spaciousness of the spaces. The development has a full range of amenities, including a swimming pool, indoor gymnasium and gourmet lounge. In addition, residents can enjoy extensive green areas with native species that enhance the natural beauty of the area. Security and privacy are a priority, which is why the complex is gated and guarded by a security checkpoint, guaranteeing peace of mind and exclusivity. Garage and storage room included in the price.

## Features:

### Features

- Lift
- Private Terrace
- Satellite TV
- Storage Room
- Ensuite Bathroom
- Double Glazing
- Fitted Wardrobes
- Gym
- Solarium
- Access for people with reduced mobility

### Setting

- Close To Sea
- Close To Shops
- Close To Town

### Kitchen

- Fully Fitted
- Kitchen-Lounge

### Parking

- Underground
- Garage

### Climate Control

- Cold A/C
- Hot A/C

### Views

- Sea Views
- Panoramic Views
- Garden Views
- Pool Views

### Pool

- Communal Pool

### Condition

- New Build

### Garden

- Communal Garden

### Security

- Entry Phone