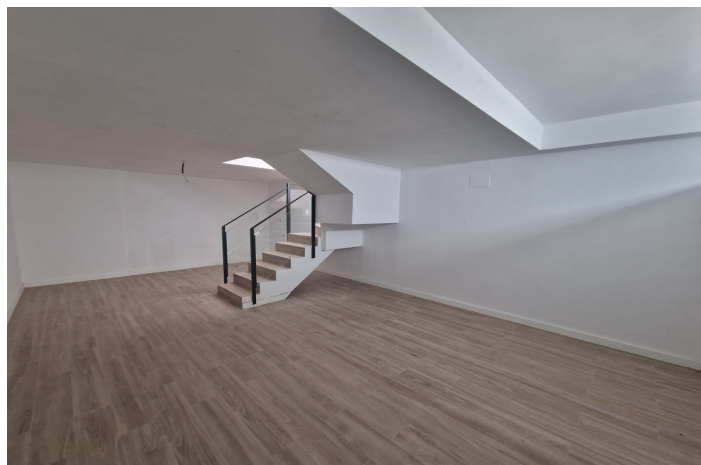




Semi-Detached House for sale in Manilva, Manilva

Price: 385,000 €

Reference1: LS10764 Bedrooms: 2 Bathrooms: 2 Plot Size: 138m² Build Size: 128m² Terrace: 0m²





Location: Manilva

New Development: Prices from 385,000 € to 490,000 €. [Beds: 2 - 3] [Baths: 2 - 3] [Built size: 128.00 m2 - 207.00 m2]
VILLA 1 207.45m² built on a 240m² plot. It has 3 bedrooms, 3 bathrooms, living room, kitchen, terrace, private garden, private garage for 2 vehicles, basement with natural light and excellent sea views. SEMI-DETACHED HOUSE 2 128.25 m² built on a 153m² plot. It has 2 bedrooms, 2 bathrooms, living room, kitchen, terrace, private garden, parking area within the plot, basement with natural light and excellent sea views. SEMI-DETACHED HOUSE 3 128.25m² built on a 138m² plot. It has 2 bedrooms, 2 bathrooms, living room, kitchen, terrace, private garden, parking area within the plot, basement with natural light and excellent sea views. SEMI-DETACHED HOUSE 5 128.25m² built on a 156m² plot. It has 2 bedrooms, 2 bathrooms, living room, kitchen, terrace, private garden, parking area within the plot, basement with natural light and excellent sea views.

Features:

Features

Private Terrace
Fitted Wardrobes

Climate Control

Cold A/C
Hot A/C

Views

Sea Views
Mountain Views
Garden Views

Setting

Close To Shops

Garden

Private Garden

Condition

New Build

Parking

Garage
Private

Kitchen

Fully Fitted