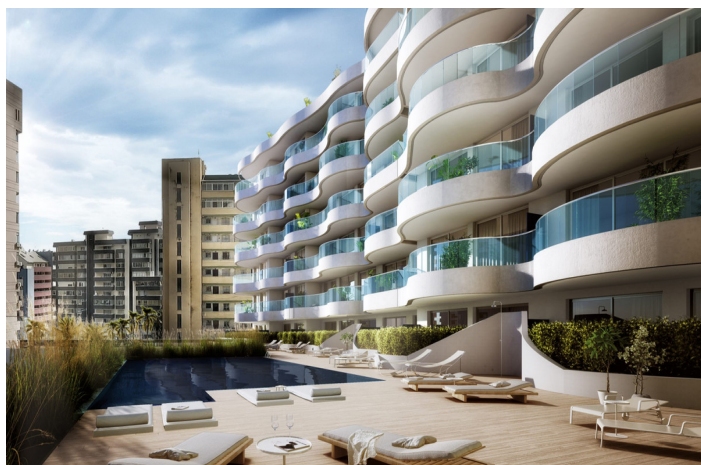




Middle Floor Apartment for sale in Fuengirola, Fuengirola

Price: 520,000 €

Reference1: LS10844 Bedrooms: 2 Bathrooms: 2 Plot Size: 0m² Build Size: 82m² Terrace: 0m²





Location: Fuengirola

New Development: Prices from 520,000 € to 975,000 €. [Beds: 2 - 3] [Baths: 2 - 3] [Built size: 82.00 m2 - 162.00 m2] This development will feature 127 homes with 1, 2, and 3 bedrooms, distributed in spacious, bright areas where quality and functionality are paramount. In addition, there are generous terraces to enjoy wonderful summer nights and sunny winter mornings. Design and architecture tailored to the needs of those who inhabit this unique project. The choice of materials has not been arbitrary, as is evident in the elegant combination of textures, shapes, and tones. Quality is reflected in every space. The dining, living, and kitchen areas form a single open space that integrates seamlessly into each home, reinforcing the sense of space and openness that this project offers in the heart of Fuengirola. Discover our exclusive 2- and 3-bedroom penthouses in the heart of Fuengirola, just steps from the beach. Enjoy unbeatable views: choose between panoramic views of the Mediterranean Sea or the city center. Some of these homes feature attic rooms, adding a special and cozy touch, ideal for those seeking something with character. Perfect for both permanent residence and investment. – Modern and bright design – Private terraces with views – Just a few meters from the beach, restaurants, shops, and all services Don't miss this unique opportunity.

Features:

Features

Covered Terrace
Lift
Near Transport
Private Terrace
Storage Room
Double Glazing
Fitted Wardrobes
Gym
Basement
Fiber Optic
Sauna

Views

Sea Views
Pool Views
Urban Views

Pool

Communal Pool

Security

Electric Blinds
Entry Phone

Orientation

South East
North East

Setting

Close To Port
Close To Sea
Close To Shops
Close To Town
Close To Schools
Town

Kitchen

Fully Fitted
Kitchen-Lounge

Parking

Underground
Garage
Private

Climate Control

Cold A/C
Hot A/C

Condition

New Build

Garden

Communal Garden
Landscaped Garden